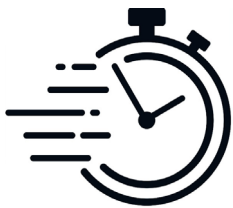


NEW! Live Online Access to Mercedes-Benz Alignment Specifications

We are excited to announce that, as of September 17, 2024, all newly purchased MB-1 aligners delivered from the factory are featuring **LIVE ONLINE ACCESS** to Mercedes-Benz vehicle alignment specifications directly from the Mercedes-Benz servers using the *Vehicle Identification Number (VIN)*.



- ✓ Save Time!
- ✓ Live Online Access!
- ✓ It's Easy!

Just enter the VIN number!

- ✓ No more time-consuming model search
- ✓ No more models missing
- ✓ Safe and fast availability of up-to-date MB vehicle specs data at any time

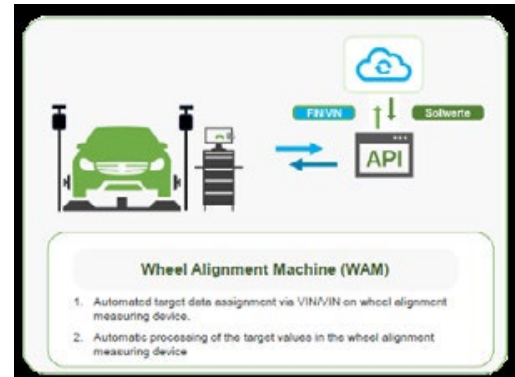
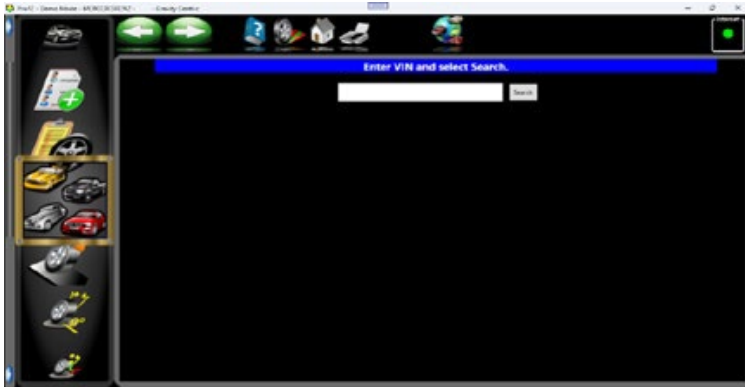


Snap-on Equipment is the first supplier approved to provide this service to Mercedes-Benz workshops.



www.hofmann-equipment.com

Machines might be equipped with optional extras, which are available at extra cost. Technical and visual modifications reserved.



MB vehicle series that are supplied via WAM (dating back to 2009) 117, 118, 166, 167, 171, 172, 176, 177, 190, 192, 204, 205, 206, 212, 213, 214, 217 except AMG, 218, 222 *except AMG*, 223, 231, 232, 236, 238, 243, 247, 253, 254, 257, 290, 292, 293, 294, 295, 296, 297, 415, 420, 447, 448, 453, 463 as of modification year 2019, 470

For questions regarding the following, please contact Mercedes-Benz directly by opening an XSF ticket in the XENTRY portal:

- WAM application to the MB server
- Inability to find a vehicle
- Errors in specifications data
- Incorrect data
- No network connection

For questions about WAM licence and registration, contact xentry-wao@mercedes-benz.com

For more information concerning the MB-1 aligner and Snap-on software, including the measuring process, please contact christopher.ivory@snapon.com

Additionally, you may send related enquiries to: OEMsupport@snapon.com
robert.seufert@snapon.com
tobias.gehbauer@snapon.com