

WITH MECHANICAL SEAL  
AND SEALLESS



# DRUM PUMPS STAINLESS STEEL

IF NO CONTAMINATION AND PRODUCT  
CARRYOVER IS ALLOWED



FOOD



BEVERAGE



PHARMACEUTICAL



COSMETICS

# Drum pumps stainless steel with mechanical seal (MS) and sealless (SL)

## DRUM PUMPS STAINLESS STEEL

IF EASY CLEANING, DURABILITY AND EXPLOSION-PROOF ARE REQUIRED



**PAINTS + COATINGS**



**ACIDS + BASES**



**SOLVENTS**



**SPECIAL APPLICATIONS, PLANT ENGINEERING**



# Our new pumps!

**The quickest way to get to know us is to contact us directly. Save your precious time.**

**Contact us and we will do the rest for you.**

Consulting service, product selection, project planning assistance and quote – fast and all free of charge.

## Advantages

more ...

- practical
- variable
- complete
- hygienic
- solid
- robust
- imaginative
- fit for use
- modular
- individual

## Sealed and sealless pumps types have grown closer to one another

The SD (Simple Disassembly) series is sealed with a mechanical seal (MS). In the SL series (sealless) there is an inner tube in the pump tube. The leakage unit depressurises the inner tube. The drive shaft is running within the inner tube. With no pressure difference between the inner tube and the outside ambient air no liquid can leave the pump, where the drive shaft comes out from the pump head. The pump is therefore always without leakage at the pump head.

Tel. +49 93 42 / 9 35 16-0  
[info@gruen-pumpen.de](mailto:info@gruen-pumpen.de)



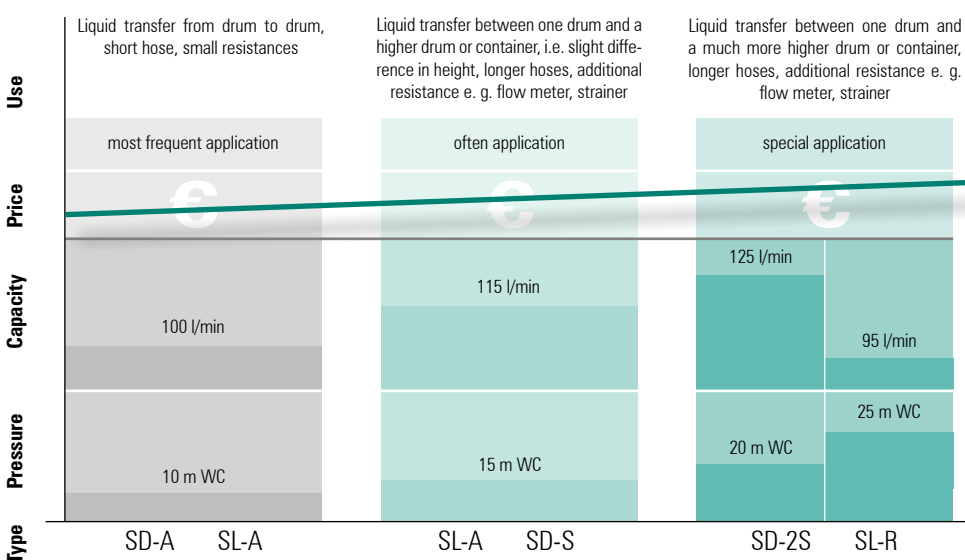
**In this booklet you will learn a lot about grün-drum pumps. We are sure you will experience proof of our commitments and product statements when using our equipment.**

**Online you can learn interesting facts about 'grün-business-philosophy' in a three minute audio slideshow.**

**Worth seeing.**

[www.gruen-pumpen.de](http://www.gruen-pumpen.de)

## The right pump for your application



# drum pumps stainless steel with features for the top position



## DRUM PUMPS STAINLESS STEEL

|  | SD-SS-                     | A         | S         | DL-SS- | A         | R         | S         | MP-DL-SS- | A         | R         | S         | Mag-SS-             | A         | R         |  |
|--|----------------------------|-----------|-----------|--------|-----------|-----------|-----------|-----------|-----------|-----------|-----------|---------------------|-----------|-----------|--|
| <b>important for your application</b>            |                            |           |           |        |           |           |           |           |           |           |           |                     |           |           |  |
| large capacity                                   |                            | X         |           |        | X         |           |           |           | X         |           |           |                     | X         |           |  |
| high pressure                                    |                            |           | X         |        |           | X         | X         |           |           | X         | X         |                     |           | X         |  |
| viscosity up to 1.500 mPas (pd500)               |                            |           | X         |        |           |           | X         |           |           |           | X         |                     |           |           |  |
| hydraulic tuning                                 |                            |           | X         |        |           | X         | X         |           |           | X         |           |                     |           |           |  |
| many different liquids                           |                            |           |           | X      |           |           |           | X         |           |           |           |                     |           |           |  |
| mixing function                                  |                            |           |           |        |           |           |           | X         |           |           |           | hermetically sealed |           |           |  |
| simple disassembly (SD)                          | X                          |           |           |        |           |           |           |           |           |           |           |                     |           |           |  |
| easy to clean                                    | X                          |           |           | X      |           |           |           | X         |           |           |           |                     |           |           |  |
| explosion proof                                  | AtEx                       |           |           | AtEx   |           |           |           | AtEx      |           |           |           | no                  |           |           |  |
| continuous work with induction motor             |                            |           | X         |        |           |           | X         |           |           |           | X         |                     |           |           |  |
| <b>tube length</b>                               | container size             | ord.-no.  |           |        | ord.-no.  |           |           | ord.-no.  |           |           | ord.-no.  |                     |           | ord.-no.  |  |
| 700 mm   | hobcock 30l                | 631-0001  | 631-0006  |        | 691-0001  | 696-0001  | 691-0006  |           | 691-0011  | 696-0011  | 691-0016  |                     | 631-0021  | 636-0021  |  |
| 1000 mm  | drum up to 220 l           | 631-0002  | 631-0007  |        | 691-0002  | 696-0002  | 691-0007  |           | 691-0012  | 696-0012  | 691-0017  |                     | 631-0022  | 636-0021  |  |
| 1200 mm  | IBC up to 1000 l           | 631-0003  | 631-0008  |        | 691-0003  | 696-0003  | 691-0008  |           | 691-0013  | 696-0013  | 691-0018  |                     | 631-0023  | 636-0021  |  |
| > 1200 mm  | special container          | on demand | on demand |        | on demand | on demand | on demand |           | on demand | on demand | on demand |                     | on demand | on demand |  |
| <b>electrical motors without explosion proof</b> |                            |           |           |        |           |           |           |           |           |           |           |                     |           |           |  |
| <b>p310</b> optimised in price                   | preferred combination      | X         |           |        | X         |           |           |           | X         |           |           |                     | X         | X         |  |
| <b>p400</b> the ideal drive                      | improved hydr. performance | X         | X         |        | X         | X         | X         |           | X         | X         | X         |                     | X         | X         |  |
| <b>pd500</b> silent worker                       | smooth product treatment   |           | X         |        |           |           | X         |           |           |           | X         |                     |           |           |  |
| <b>electrical motors with explosion proof</b>    |                            |           |           |        |           |           |           |           |           |           |           |                     |           |           |  |
| <b>EX700</b> for hazardous locations             | safety by power            | X         | X         |        | X         | X         | X         |           | X         | X         | X         |                     |           |           |  |
| <b>pd500</b> Ex                                  | smooth product treatment   |           | X         |        |           |           | X         |           |           |           | X         |                     |           |           |  |
| <b>compressed air motor for all applications</b> |                            |           |           |        |           |           |           |           |           |           |           |                     |           |           |  |
| <b>d600</b> for hazardous locations              | the power drive            | X         | X         |        | X         | X         | X         |           | X         | X         | X         |                     |           |           |  |

# Drive motors, select the best drive for every application

## p310 optimised in price



## p400 the ideal drive



## Ex700 safety through power in hazardous locations



## pd500 the silent marathon worker

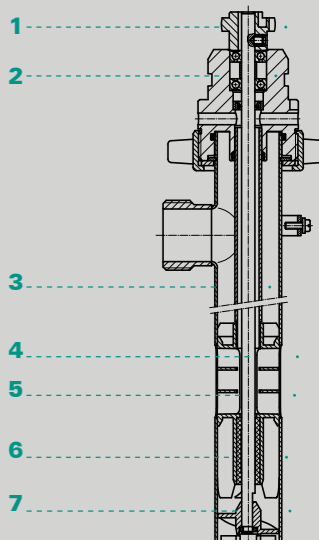


## d600 the power drive for all locations



| properties                | short and occasional use, it likes light and thin liquids, internal cooling                                       | big resources in power and durability, works quickly and saves time, internal cooling  | big resources in power and durability, certified for the most liquids, external cooling (TEFC) | robust, without wear, powerful for viscous liquids, smooth product treatment with feed screw (S) 2800 rpm                 | for heavy duty applications, economical air consumption, certified for hazardous locations, variable speed, starting knob fixable, lightweight |
|---------------------------|---|--|--|---|--|
| options                   | low voltage release (LVR) recommended according to EU-directives, speed reducer (SR) varies pressure and capacity | low voltage release (LVR) recommended according to EU-directives, speed reducer (SR) varies pressure and capacity, IP54 with TEFC (MA) | without LVR available for special applications   | single phase induction motor 230 V, three phase 230/400 V, explosion proof 3- phase 230/400 V, overload protection switch |  |
| data                      |   |  |  |   |  |
| power (W)                 | 520   | 850  | 700  | 370 und 550   | 600  |
| voltage (V)               | 230   120   | 230   120  | 230  | 230   400   | compressed air 3-7 (bar)   |
| protection                | IP24  | IP24 / IP54   IP24   | IP54   | IP54  | air consumption 10 (l/s)   |
| LVR*                      | optional  | optional   | EU-directive   | optional  |  |
| SR**                      | optional  | optional   | -  | with frequency inverter (FI)  | standard   |
| weight (kg)               | 3,5   | 4  | 6  | 5   5   | weight (kg) 2  |
|                           | type of impeller s. p. 4/5  | Förderelement s.S. 4/5   | type of impeller s. p. 4/5   | type of impeller s. p. 4/5  | type of impeller s. p. 4/5   |
| max. spec. gravity (kg/l) | A   1,4   | A / R / S   2 / 1,8 / 1,5  | A / R / S   1,8 / 1,6 / 1,4  | S: 2   S: 2,5   | A / R / S   2 / 2 / 2  |
| max. viscosity (mPas)     | 250   | A / R / S   800 / 600 / 500  | 600 / 500 / 400  | S: 1500   S: 1800   | A / R / S   800 / 800 / 800  |

1. coupling PA
2. pump head SS
3. pump tube SS
4. Drive shaft SS
5. inner tube SS
6. slide bearing Carbon
7. Impeller ETFE

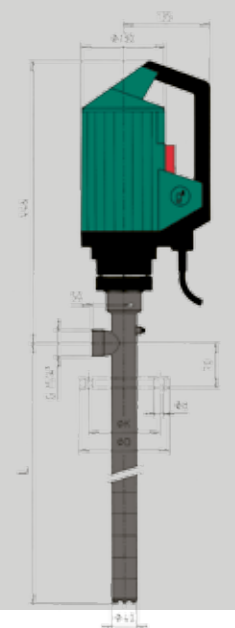
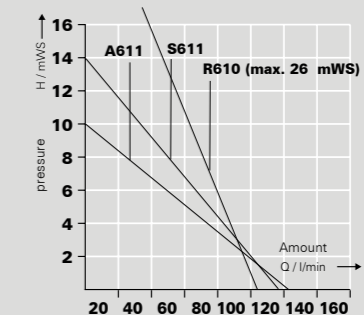
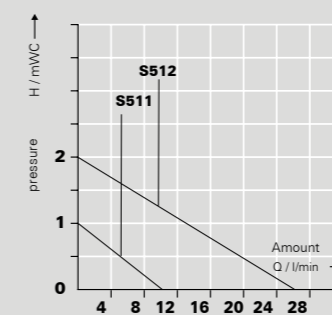
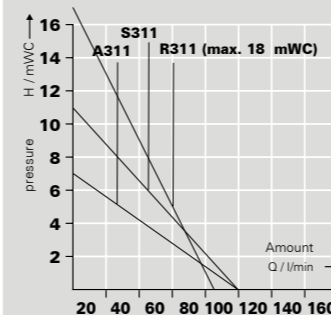
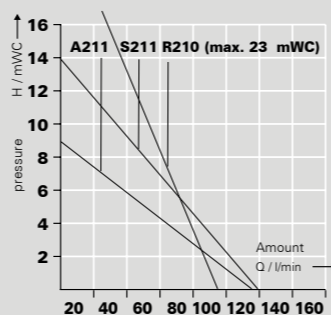
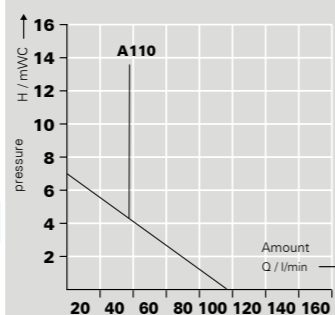


|                           | ord.-no  |          | ord.-no  |          | ord.-no  | ord.-no               |          |
|---------------------------|----------|----------|----------|----------|----------|-----------------------|----------|
| with LVR*                 | 500-0016 | 500-0028 | 500-0023 | 500-0025 | 510-0010 | pd500-1-0,37-230      | 500-0042 |
| with SR** and LVR         | 500-0074 | 500-0060 | 500-0069 | 500-0066 |          | pd500-3-0,37 230/400  | 500-0039 |
| without LVR               | 500-0017 | 500-0029 | 500-0024 | 500-0026 | 510-0012 | pd500-FU-0,55 kW      | 500-0043 |
| without LVR with SR       | 500-0054 | 500-0057 | 500-0056 | 500-0063 |          | pd500 Ex-0,37 230/400 | 510-0009 |
| magnetic clutch , LVR     | 500-0030 | 500-0032 | 500-0034 | 500-0036 |          | <b>AtEx</b>           |          |
| magnetic clutch , LVR, SR | 500-0061 | 500-0062 | 500-0067 | 500-0068 |          |                       |          |
| TEFC (MA) IP54            |          |          | 500-0072 |          |          |                       |          |

### characteristics

\* low voltage release  
\*\* speed reducer

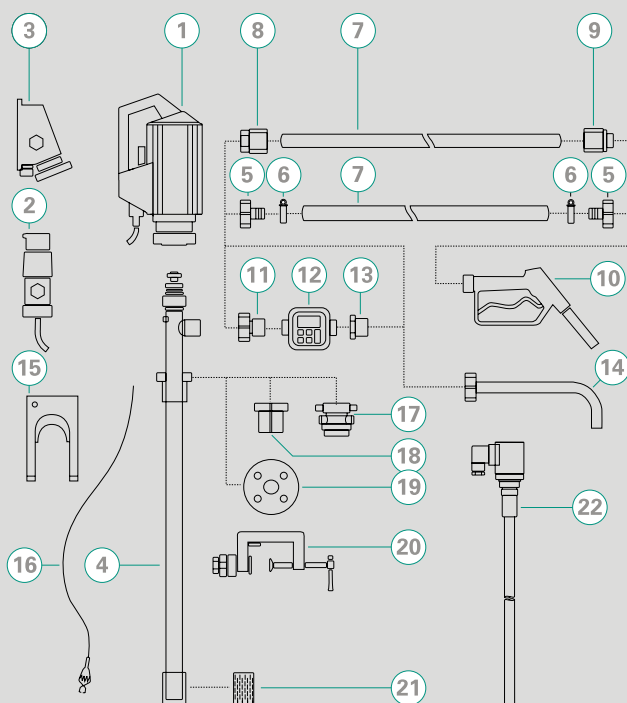
recommended types



Other pumps in separate catalogue.



# ACCESSORIES



- 1 Drive motor
- 2 Explosion-proof plug
- 3 Explosion-proof socket
- 4 Pump tube
- 5 Hose connector
- 6 Hose clamps
- 7 Hose
- 8 Hose fittings
- 9 Hose fittings
- 10 Nozzle
- 11 Flow meter connection
- 12 Flow meter
- 13 Reducing piece
- 14 Discharge spout
- 15 Wall bracket
- 16 Equipotential bonding cable
- 17 Emission proof drum adapter
- 18 Drum adapter
- 19 Installation flange
- 20 Clamping device
- 21 Foot strainer
- 22 Level switch

Distributor:

**grün-pumpen gmbh**  
 Otto-Schott Str. 19  
 D-97877 Wertheim  
 Phone +49 93 42 9 35 16-0  
 Fax +49 93 42 9 35 16-29  
 info@gruen-pumpen.de  
 www.gruen-pumpen.de

**Handelsregister:**  
 Reg. Gericht Mannheim  
 HRB 570326  
**Sitz der Gesellschaft:**  
 Wertheim  
**Geschäftsführer:**  
 Ralph Dostmann, Dr. Thomas Sigel  
 USt.IdNr. DE 160765854

**g**<sup>®</sup>  
 grün-pumpen  
 take out, what's in.