

a-swipe is a self-cleaning mesh filter with a motorized brush cleaning system which easily regenerates the filtering element within a few seconds, without interrupting the flow.

a-swipe's vessel and cleaning system are entirely made of stainless steel equipped with Nylon Brushes which makes the filter very robust and low-maintenance.

a-swipe is ideal to treat water loaded with non-colloidal suspended solids and is usually implemented in well-water, canals, rivers and industrial applications; it is available in 2 different constructive shapes, Y and L, in order to adapt to different installation layouts.

The wide array of filter screens, supplied with a PES or Stainless Steel AISI 316 filtering mesh, allows the user to choose between various filtration degrees, ranging from 3000µm to 80µm.

a-swipe is supplied complete of valves, pressure gauges and electronic controller.

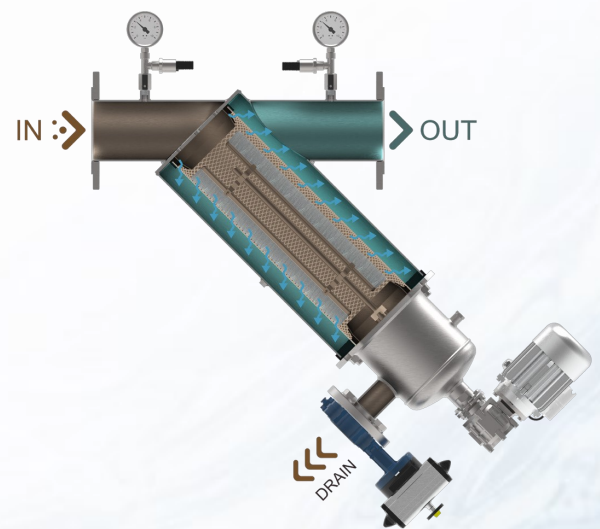
FILTRATION PROCESS

To-be-treated raw liquid enters the filter through the inlet connection (IN), suspended solids are retained inside the filtering element and filtered liquid flows out of the outlet connection (OUT).

CLEANING

The continuous build-up of solids, trapped inside the filter mesh, creates a differential pressure between inlet and outlet that can be read on the filter's manometers. The cleaning cycle is activated at regular time intervals or when the progressive build-up of suspended solids, trapped inside the filtering mesh, causes an excessive differential pressure between inlet and outlet (0,8 bar). Both parameters can be set through the controller.

During the cleaning cycle the drain valve is opened to drain impurities while the brushes start rotating and removing the dirt accumulated on the filtering element, flushing it towards the drain (DRAIN). Filtration is not interrupted during this process.

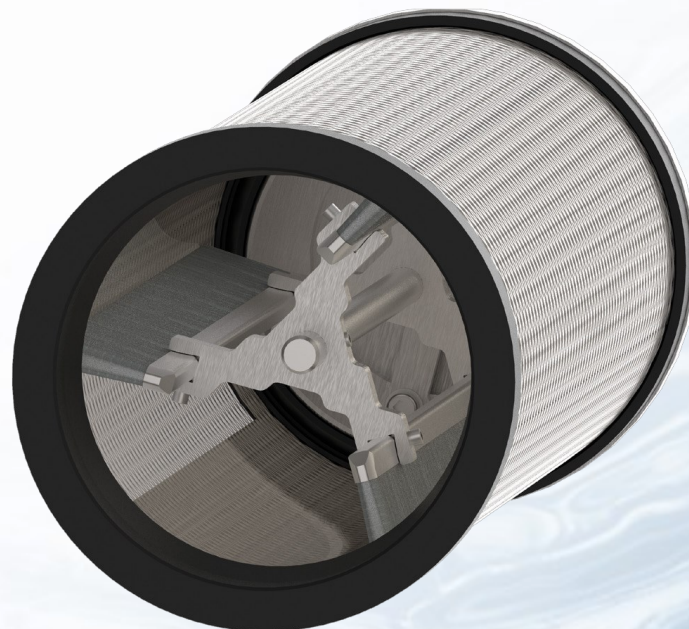


TECHNICAL SPECIFICATION

MATERIAL		DESIGN DATA	
Filter housing	Stainless steel AISI 304 - AISI 316L	Flow rate	Up to 260 m ³ /h
Gasket	EPDM*	Design pressure [bar]	PN 10
Drain/Vent valve	Cast Iron body with AISI 316L lens	Max Temperature [°C]	80
Pressure Gauges	Stainless steel AISI 304 - AISI 316L	Salinity [TDS]	<10.000 ppm
Surface finish	Microshot Peening and Passivation	pH range	3-9
* Certified for the following European Drinking Water regulations: UBA, DVGW-standard W-270, WRAS och ACS.		Design Code	PED 68/2014/EU Machinery Directive 42/2006/CE LVD Directive 35/2014/EU
POWER SUPPLY		ACTUATION	
Electric Voltage	230Vac 50/60 Hz single phase	Electric motor	230Vac 0,11 kW
Compressed air	6 bar	Solenoid Valve	Electropneumatic 24 Vdc

CONTROLLER

POWER SUPPLY	PROTECTION CLASS	MATERIAL	INPUT	OUTPUT	CLEANING CUUPLE MANAGEMENT
230Vac 50/60 Hz single phase	IP65	ABS	2 digital (Pause, DP)	4 SPDT 16A 250Vac	Differential Pressure (0,6-0,8bar)
			3 analogic (Pressure)	4 SPST 1A 24Vdc	Pre-set time intervals
				1 SPST (alarm)	Manual

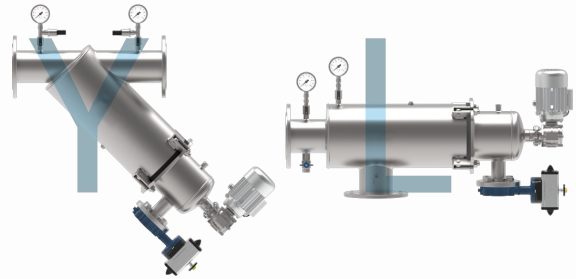


FEATURES

a-swipe filters are manufactured with technical and constructive features suitable for industrial applications and are available in 2 different constructive shapes: Y and L with flanged connection.

The vessel is manufactured in Stainless Steel AISI 304 or in AISI 316 upon request and is available in Y and L constructive shapes. For each shape four different sizes are available: 6, 8, 18 and 30 which differ in the size of the filtering element inside them.

After the welding the component will receive two surface treatments: micro-shot peening and passivation. The former provides a greater surface resistance and removes any manufacturing impurities whereas the latter recreates the passive film on the material protecting against corrosion.



CONNECTIONS

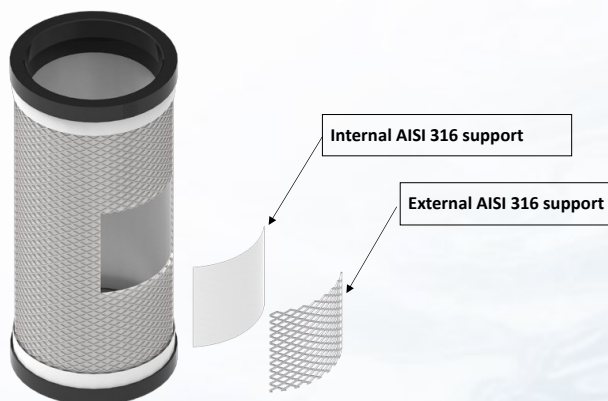
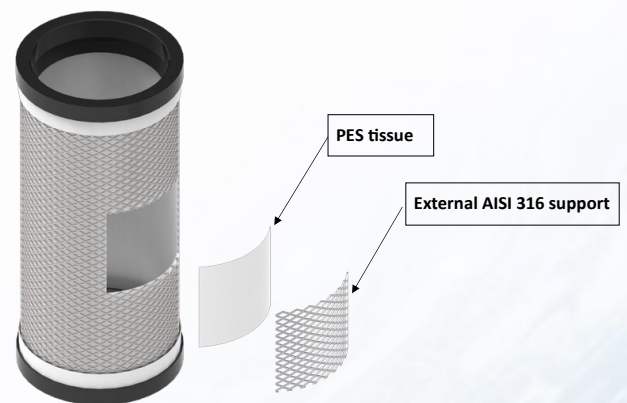


a-swipes Inlet and Outlet connections can be BSPP Threaded up to 3" and are ISO PN16 lap-joint flanged from DN80 onwards.

FILTERING ELEMENT

PES FILTER KIT

Composed of an AISI 316 Stainless Steel cylinder within which a polyester (PES) filter tissue is inserted, its wide array of available filtering tissues and allows the customer to choose from various filtration degrees starting from 25µm up to 810µm.



2LAYER STEINLESS STEEL FILTER KIT

Composed of a double layer stainless steel AISI 316 mesh, this type of filtering element is very resistant and proves to be an extremely valid alternative to PES FILTERKIT when it comes to harsh operating conditions, especially when sharp or cutting suspended solids might be present inside the liquid.

FLOW RATES

You can select the product you need by identifying the IN/OUT connections and MAX flowrate first, then choosing one of the available constructive shapes and finally the relative size of the filtering element.

IN/OUT Ø	MAX FLOW RATE*		SHAPE		FILTERING SURFACE		
	[m ³ /h]	[l/min]	Y	L	SIZE	[cm ²]	[in ²]
2" BSPP	30	500	✓	✓	6	1500	233
3" BSPP	60	1000	✓	✓			
DN80	60	1000	✓	✓			
DN100	100	1666	✓	✓	8	2200	341
3" BSPP	70	1166	✓	✓			
DN80	70	1166	✓	✓			
DN100	110	1833	✓	✓	18	3300	512
DN100	120	2000	✓	✓			
DN150	240	4000	✓	✓			
DN100	120	2000	✓	✓	30	5400	837
DN150	260	4333	✓	✓			
DN200	400	6666	-	✓			

*Max flow rates are calculated based on clean water with a filtration degree of 120µm

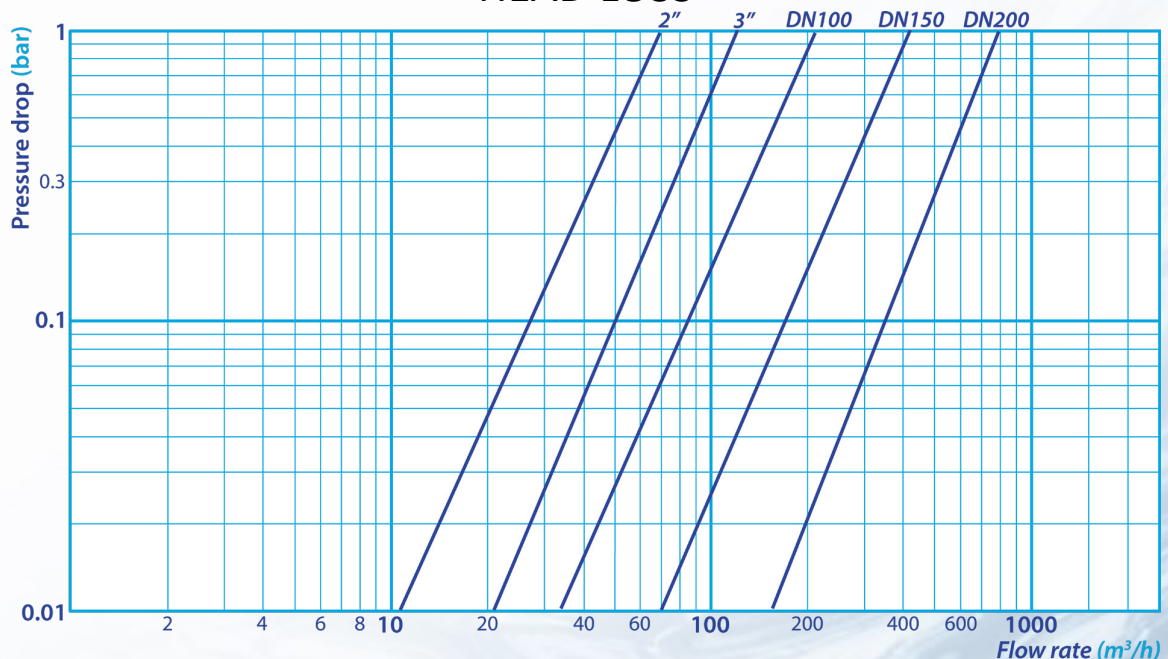
With the same IN/OUT connection and the same MAX flowrate, the larger filter will require less cleaning than the smaller one.

CLEANING CYCLE

	SIZE 6	SIZE 8	SIZE 18	SIZE 30
Min. cleaning flowrate	10 m ³ /h	15 m ³ /h	15 m ³ /h	20 m ³ /h
Min. pressure during cleaning cycle	1.5 bar	1.5 bar	1.5 bar	1.5 bar
Water consumption full cleaning cycle	55 L	84 L	84 L	110 L
Cleaning cycle's length	20-25 s	20-25 s	20-25 s	20-25 s

* For inferior flowrates and/or pressures please contact Heation AB for more information.

HEAD LOSS



Head losses are referred to filters with 120 µm clean filtering mesh.

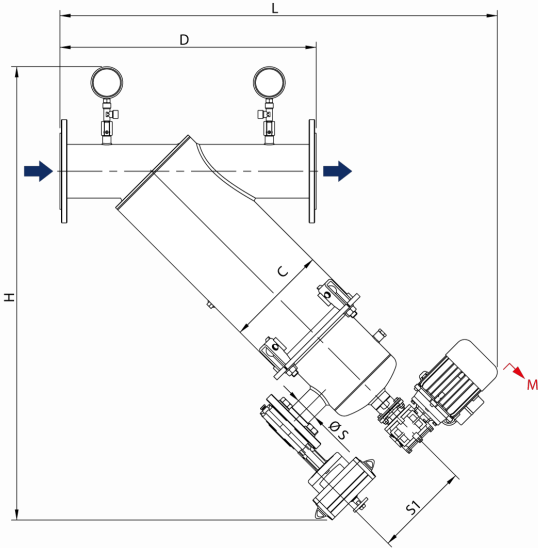
MODEL COMPOSITION

The model that identifies the filter is composed as follows:

A-SPH	2"	Y	6
FILTER ACRONYM	CONNECTION	VESSEL SHAPE	SIZE

DIMENSIONS

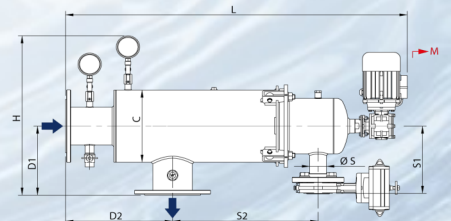
Y SHAPE



MODEL	D [mm]	L [mm]	H [mm]	C [mm]	S1 [mm]	ØS [mm]	R [mm]	M* [mm]	WEIGHT [Kg]
A-SPH 2" Y 6	412	740	600	219	240	1" BSPP	140	500	21
A-SPH 3" Y 6	464	765	615	219	240	1" BSPP	140	500	22
A-SPH 80 Y 6	487	765	615	219	240	1" BSPP	140	500	26
A-SPH 100 Y 6	547	807	627	219	240	1" BSPP	140	500	28
A-SPH 3" Y 8	464	875	748	219	240	1" ½ BSPP	140	700	26
A-SPH 80 Y 8	487	874	748	219	240	1" ½ BSPP	140	700	30
A-SPH 100 Y 8	547	916	761	219	240	1" ½ BSPP	140	700	32
A-SPH 100 Y 18	585	955	761	273	240	1" ½ BSPP	180	700	39
A-SPH 150 Y 18	660	978	788	273	240	1" ½ BSPP	180	700	44
A-SPH 100 Y 30	585	1171	978	273	255	2" BSPP	180	1000	47
A-SPH 150 Y 30	660	1194	1006	273	255	2" BSPP	180	1000	52

MODEL	D1 [mm]	D2 [mm]	L [mm]	H [mm]	C [mm]	S1 [mm]	S2 [mm]	ØS [mm]	R [mm]	M* [mm]	WEIGHT [Kg]
A-SPH 2" L 6	190	310	854	390	219	240	268	1" BSPP	140	500	21
A-SPH 3" L 6	190	310	854	390	219	240	268	1" BSPP	140	500	22
A-SPH 80 L 6	210	310	854	410	219	240	268	1" BSPP	140	500	27
A-SPH 100 L 6	210	310	854	410	219	240	268	1" BSPP	140	500	28
A-SPH 3" L 8	190	310	1008	390	219	240	422	1" ½ BSPP	140	700	26
A-SPH 80 L 8	210	310	1008	410	219	240	422	1" ½ BSPP	140	700	31
A-SPH 100 L 8	210	310	1008	410	219	240	422	1" ½ BSPP	140	700	32
A-SPH 100 L 18	246	350	1062	480	273	240	422	1" ½ BSPP	180	700	39
A-SPH 150 L 18	246	350	1062	480	273	240	422	1" ½ BSPP	180	700	44
A-SPH 100 L 30	246	350	1368	480	273	255	728	2" BSPP	180	1000	47
A-SPH 150 L 30	246	350	1368	480	273	255	728	2" BSPP	180	1000	52
A-SPH 200 L 30	266	350	1368	500	273	255	728	2" BSPP	180	1000	57

L SHAPE



*M = Minimum free space required for maintenance.



dolphin
Vatten vi älskar

Heation AB

Laxholmstorget 3
602 21 NORRKÖPING SWEDEN

E-mail: heation@heationab.com

Phone number: +46(0)763102470

www.heationab.com/dolphin

Company number: 559193-4640