

IMS POWERDUCTION 110LG

WATER COOLED INDUCTION HEATING

Ref: 027909

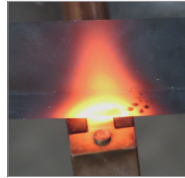


POWERDUCTION 110LG supplies an instant heating power to unseize, and to heat up steel or aluminium. It can heat up metal to a power of 11 kW without interruption due to its effective liquid cooling system. Powered by 400 V three-phase power, it works on 16 A plug.

SUITED TO ALL SECTORS



Mechanics & car maintenance, trucks & construction industry



Sectors : Industry, maritime, railways, maintenance.



A WIDE RANGE OF APPLICATIONS

- Bent chassis straightening (not steel)
- Releasing bolts, steering ball joints without damaging the rubber boots
- Removing seized hub bearings
- Removal of exhaust system
- Annealing of metal parts
- Heating for bending
- Brazing
- etc.

GUARANTEED POWER AND TIME SAVING

• Heating power :

11 kW selectable in 1000 W steps

Heats into the metal's heart, to a 6 mm depth.

Red light (800°C) :

	50LG	110 LG	160LG
	M14 → 1 s	M18 → 1 s	M20 → 1 s
	4 mm → 5 s 2 mm → 3 s	4 mm → 4 s 2 mm → 2 s	4 mm → 4 s 2 mm → 2 s
	Ø 10 → 10 s	Ø 10 → 7 s	Ø 10 → 5 s

• Safety and time saving :

Immediate heating without flame on a specific area, it can be used close to cables, pipes, or other heat sensitive part avoiding the need to disassemble them.

• User comfort :

4 meter induction cable which allows to work at height or in any places the generator cannot fit.

• Supplied with a pneumatic pedal

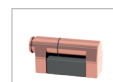
As an alternative to the heating button on the lance, a pneumatic foot pedal simplifies handling during operations that are difficult to access.



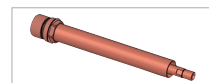
Consumables

Inductors and accessories

• Original supplied



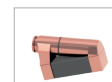
Inductor L90
Ref. 059788



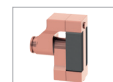
Adaptor 32L
Ref. 064515

• Optional

110LG / 160LG



Inductor L70
Ref. 059771



Inductor L180
Ref. 059795

For using inductors from the 37 LG



Adaptor 32S
Ref. 064508



Inductor S70
Ref. 061569



Inductor S90
Ref. 058927



Inductor S180
Ref. 059269

Cooling liquid



The product requires regular renewal of cooling liquid available separately (ref. 052246).

50 Hz	A	kW	Freq. kHz	X% @ 35°C min	Capacity of cooling liquid tank	cm	kg	m	m

400 V 3~	16	11	25-40	continu	7 l	59 x 88 x 59	80	5	4
----------	----	----	-------	---------	-----	--------------	----	---	---