

# IMS TIG 220 DC HF

## TIG DC - HF FV SINGLE PHASE

Ref: 012486



Sturdy construction, designed for pipe welding, the TIG 220 DC is a high quality welder for mild and stainless steels (TIG and MMA). Its ergonomic interface makes settings adjustment easy and intuitive.

### OPTIMISED DC WELDING

- **TIG DC** : continuous current for ferrous metals.
- **TIG DC Pulse** : reduces heat distortion of the workpiece.
- **SPOT** : Fast and precise spot welding, ideal before welding thin metal sheets.
- **2 types of start-up** : HF (without contact) or LIFT (with contact) for electro-sensitive environments.
- **3 trigger modes** : 2T, 4T and 4T LOG.
- **Automatic detection of the torch** : compatible with trigger, double button and potentiometer torches.
- **AIP** (*Adjust Ideal Position*) : helps to position the torch before welding (4T & 4T LOG modes).

### MMA WELDING

- **MMA** : Basic rutiles and rutile electrodes (*up to Ø 5 mm*).
- **MMA Pulse** : Developed for pipe welding as well as vertical up welding.

### STURDY

- Reinforced panels & shockproof rubber pads on the external body.
- Light (*12.5 kg*), compact and easy to move on-site.

### ERGONOMIC INTERFACE

- **Displays current/voltage** during and after welding (*DMOS/QMOS*).
- **Save 10 programs for each process**, for repetitive tasks.
- **Foot pedal and remote control** (optional).

### HIGH-TECH POWER SUPPLY

- **FV** **Flexible Voltage power supply**, the machine will work on a single phase power supply from 85 to 265 V.
- **PFC** **TPFC technology (Power Factor Correction)**, the electrical power supply usage is optimised for up to 30% energy savings.

### WATERCOOLING (optional)

- **Automatic**, the cooling unit is controlled by the machine.
- **Easy connection** thanks to the two Plug & Play connectors.
- **Water cooled torch**, for better comfort and access to difficult areas.

### ACCESSORIES

Cooling unit :



WCU 0.5kW A  
039490

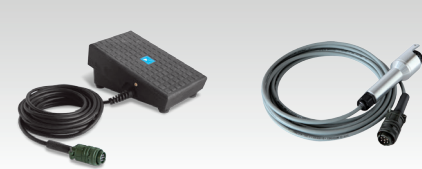
Torches 8m :



SR26 L  
046184

SR20 DB  
046146

Remote control :



Foot pedal - 4m / 3kg  
045682

Manual - 8m / 1kg  
032217



Trolley 10m<sup>3</sup>  
039711



Hand trolley 10m<sup>3</sup>  
039704



Supplied without accessories.



- **Clear and intuitive interface.**
- **Quick adjustments** on the front panel :

- pre-gas / post-gas
- upslope time
- welding current
- hot / cold current
- pulse frequency
- downslope time

50/60 Hz	A	I <sub>2</sub> TIG A	I <sub>2</sub> MMA A	INTEGRATED TECHNOLOGY			TIG EN 60974-1 (40°C)	MMA EN 60974-1 (40°C)	U <sub>0</sub> V	mm <sup>2</sup>	cm	kg	IP	Protected & compatible power generator (+/-15%)	
				PULSE	AIP	SR									
230V 1~	16	5 → 220	10 → 200	0.1 → 900 Hz	■	■	165A @ 60% 220A @ 35%	135A @ 60% 200A @ 25%	76	35/50	42x23x35	12.5	IP 21	7 kW	7 kVA
110V 1~	32	5 → 180	10 → 140	0.1 → 900 Hz	■	■	125A @ 60% 180A @ 40%	120A @ 60% 140A @ 30%							