



GLOBAL CONTROL PLUS

Globally Developed for Worldwide Use

MESSERS GLOBAL CONTROL PLUS ADVANCED TECHNOLOGY, HIGH RELIABILITY, EASY TO USE AND COMPACT.

Our exclusive CNC control includes expertise gained from thousands of machine installations around the world. An extensive custom shape library, multiple process databases, CAD import, true-shape nesting, productivity monitoring and remote diagnostics are just some of the key features packaged in the industry's only IP67 rated enclosure. In just a few minutes, new employees become expert operators.



GLOBAL CONTROL PLUS

TECHNICAL GUIDE



TECHNICAL DATA

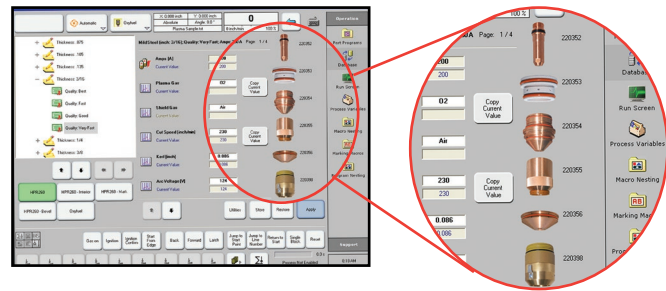
Operating System	MS Windows® XP Professional	Ethernet Network	10/100/1000 Mbps
Display	15" LED Color Touch Screen	Ambient Temperature	32° - 122° F (0°-50°)
Processor	≥ Intel® 1.9 GHz, 2 cores	Protection	UPS Battery Pack, Anti-Virus, Disk Image
Hard Drive	≥ 1GB DDR-RAM ≥ 2.5", 80GB SATA Hard Drive	Inputs/Outputs	Over 100,000 I/O via real-time EtherCat Bus System
Environment	IP67 (No ingress of dust or water)	USB Ports	Two (2) USB Ports

FEATURES AND BENEFITS

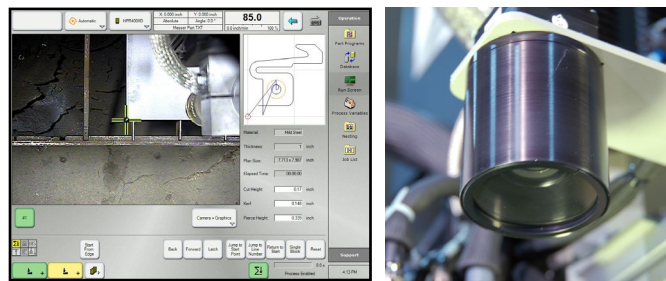
- Multiple process databases make every operator an expert
- Modern graphical interface minimizes the learning curve
- Industrial CNC computer with integrated PLC and motion control eliminates expensive, proprietary cards while providing high performance and reliability
- Ethernet-based I/O system (EtherCAT) provides real-time updates with minimal cables that are hardened against RF noise
- Downtime is minimized and new operators can be easily trained using our Virtual Service remote diagnostic software
- True shape nesting and direct import of CAD files allow parts to be cut quickly on the shop floor with minimal scrap and without additional resources
- Over 50+ standard shapes come standard. The software also allows for additional custom shapes to be created by the end-user
- An 8-position joystick and feedrate override dial create an operator-friendly panel
- Backup Tool keeps an image of the hard drive to minimize downtime due to virus activity, malware, etc.

OPTIONAL FEATURES

- Global Reporter allows for real-time production monitoring of the machine from a remote location and generation of custom reports of arc on-time, standby time, rapid positioning time, etc.
- Video camera(s) can be used as an alignment tool in lieu of a typical laser pointer and can also allow viewing of a cutting or marking process



Cutting parameter database (plasma /oxyfuel) with display of consumables makes process set-up quick and error-free



Video camera featured above (right) allows for fast, accurate plate alignment.