



# EASY OPERATION. BETTER COMPACTION.

FOR PERFECTIONISTS: THE BOMAG LIGHT EQUIPMENT RANGE.



# MILLIONS OF KILOMETRES BEAR OUR HALLMARK.

You build the best roads and structures. You mend, repair and create so that our environment remains worth living in. To make this work easier for you we make the best machines - from tampers and vibratory plates to hand-guided vibratory rollers and multi-purpose compactors. For over 60 years, our company's history has been compaction technology history.

With our deep collective expertise we drive innovation and set the pace for an entire industry. BOMAG has developed countless technologies, from systems for measuring and improving compaction, such as the ECONOMIZER, to technologies for reducing operating costs, such as ECOMODE. We offer effective solutions for the most diverse applications, for example, the unique

STONEGUARD technology which prevents block paving from fracturing during vibratory compaction.

Our global network of expert dealers in over 120 countries is there to support you, from advising on the best configuration of machines to providing solutions for the most challenging tasks. We owe our innovative flair to our 2,000-plus employees worldwide, their commitment and their unique depth of experience. A source of know-how which underpins our worldwide market leadership. Another factor is our unconditional commitment to quality: in product development and production, in the skills of our employees, and in customer service which guarantees optimum on-site support.





# COMPACTION MEANS BOMAG.

*If you work your sites hard, you need machines you can rely on. That's why at BOMAG we have specialised in easy handling, robust and safe equipment for decades. And this will never change.*

## **GROWING UP WITH LIGHTER MODELS.**

When BOMAG built the BW 60, the world's first hand-guided double vibratory all-drum drive roller in 1957, the model became a milestone in compaction performance.

The close relationship with our customers back then allowed us, as it still does, to develop machines and systems which make site-work easier. This legacy is something customers around the world value and is the reason the industry places its trust in BOMAG.



# TABLE OF CONTENTS

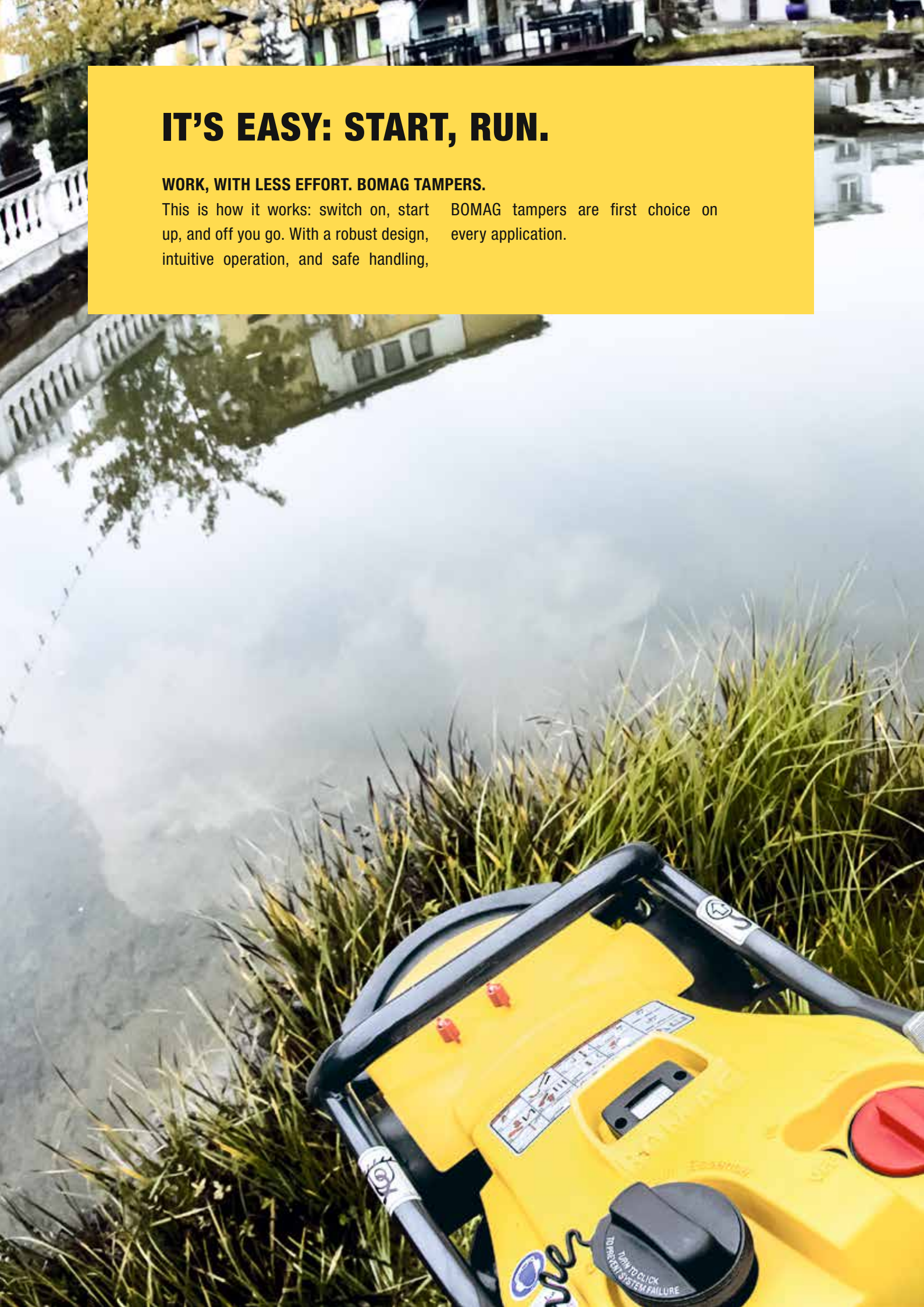
|    |   |
|----|---|
| 06 | TAMPERS                                   |
| 14 | SINGLE DIRECTION VIBRATORY PLATES         |
| 20 | REVERSIBLE VIBRATORY PLATES               |
| 28 | HAND-GUIDED VIBRATORY ROLLERS             |
| 34 | MULTI-PURPOSE COMPACTORS                  |
| 42 | BOMAG ORIGINAL PARTS AND SERVICE          |
| 44 | PRACTICAL TIPS FOR EARTHWORKS AND ASPHALT |
| 46 | PRACTICAL TIPS FOR PAVING WORK            |
| 48 | MODEL OVERVIEW                            |

# IT'S EASY: START, RUN.

## WORK, WITH LESS EFFORT. BOMAG TAMPERS.

This is how it works: switch on, start up, and off you go. With a robust design, intuitive operation, and safe handling,

BOMAG tampers are first choice on every application.





# FOUR STROKE WINNER.

*Robust, reliable and extremely tough: these 4-stroke engine BOMAG tampers are ideal for trench and sewage systems, gardening and landscaping, compaction on backfill, foundations, patching and repairs. Less effort to operate, durable, designed to deliver high performance.*



**A POWER-PACKED UNIT:  
MODEL BT 65 FOR MAXIMUM  
COMPACTION PERFORMANCE.**

The most powerful tamper in its class: for heavy-duty usage, the best compaction results, and overall efficiency. The reference class for professional users.



**LIGHTWEIGHT: MODEL BT 60  
EFFORTLESS HANDLING.**

The lightest tamper in this performance class: ideal for long working shifts in confined spaces. The reference class for professional users.



**ECONOMY MODEL: BVT 65  
FOR ALL-ROUND COMPACTION  
PERFORMANCE.**

Sets the standards in the premium class: for economic use on a wide range of applications. BOMAG performance: Outstanding design.



**DIESEL POWER: MODEL BT 80 D  
FOR THE MOST CHALLENGING  
CONDITIONS.**

Diesel power for extended use on tough sites. The specialist model for demanding jobs needing extra impact forces and productivity.



# MORE KEY FEATURES.

## LONGER SERVICE LIFE

The two-stage dual air filter system on BT series petrol models gives maximum availability and extended service life.

## FULL LUBRICATION

A unique BOMAG lubrication system provides optimum oil supply in the crankcase at all angles. The engine is also protected by the automatic oil level check system.



## MOVE QUICKLY

Optional transport wheels for easy handling around site.



### **EVERYTHING IN EASY VIEW**

Stay up to date with hour counter and tachometer plus integrated service display.



### **SAFE OPERATION**

The height adjustable, anti-vibration guide handle can be adjusted to suit every operator. Ensuring fatigue-free work.

### **UNDER FULL CONTROL**

ON/OFF safety easy-action switch for prompt engine and fuel start-up and shutdown.

### **FULLY PROTECTED**

The engine protection cover provides optimum damage protection on-site. Even heavy-handling off the delivery truck won't damage the durable plastic, reducing repair costs by up to 33%.



Working in deep trenches or enclosed spaces? No problem with the new reduced-CO emission BOMAG tamper models. And for users wishing for even greater safety and environmental features the BOMAG G series is the answer. The gas drive unit means only negligible amounts of CO are produced. A practical solution for challenging job conditions.

# GAS: THE CLEANER CHOICE OF FUEL.

*Some jobs present bigger challenges than others: e.g. enclosed spaces or deep trenches. The first gas-operated tamper worldwide from BOMAG meets the highest health and safety demands for extreme site conditions.*

## **BREATHE EASILY:**

BOMAG offers the first worldwide models driven by gas, the BT 60 G and BT 65 G tampers. These units excel with almost untraceable CO emissions. They are highly environmentally-friendly and safeguard operator health under extreme job conditions.

These tampers are equipped with the latest 4-stroke engines fuelled by standard propane gas. The two safety bottles can be filled and re-filled with ease on site. A full tank will give 2 hours' operation.



Technical modification may be required in certain markets.

# HIGH OUTPUT. ON PATHS. ON ROADS.

## FAST FORWARD OPERATION. BOMAG SINGLE DIRECTION VIBRATORY PLATES.

You can trust BOMAG quality and performance on all small site operations. High output. Reliability. For earthworks,

bases, asphalt or block paving. And now we've made our small plates even more robust.





**BOMAG**



# QUALITY COMPACTION.

*BOMAG single direction vibratory plates are designed for use on all earthworks, asphalt and paving applications. The range offers the right solution every time plus extra BOMAG reliability and compaction power.*

## **LIGHTER WEIGHT MODELS: MODELS BP 10/35 AND BP 12/40.**

For a fast repair, small area or patching job. These units offer easy handling and economic operation. Especially useful in tight corners or on areas difficult to access.



## **THE ASPHALT SPECIALIST: MODEL BP 12/50 A.**

Fitted with a special base plate, this unit is ideal for all asphalt applications. No scuffs on the asphalt surface when turning. This model gives a perfect surface finish.



## **POWER-PACKED UNITS: MODELS BP 20/50, BP 20/50 D, BP 25/50 AND BP 25/50 D.**

These are the right plates for the specialist user who needs to meet the highest compaction demands every time.





**MULTI-TALENTED:**

**MODELS BVP 10/36 AND BVP 18/45.**

These compact, versatile units are indispensable for day-to-day use on the most frequent applications in repair and maintenance works, earthworks, asphalt and paving. Developed for contractors who demand BOMAG quality!



# ALL THE MAIN FEATURES...

## DAMPING FOR SAFETY

The hinged guide handle is mounted on effective ‚silentblock‘ rubber mounts which reduce hand/arm vibrations to the minimum. This feature applies to both the BP and BVP series.

## SAFE GRIP

The transport handles allows a safe grip on all models for loading.



## SENSITIVE COMPACTION

Optional plastic mats for all models offer perfect protection to block paving surfaces. A clear advantage on coated blocks. Available on all models.

### **FAST TO FILL**

The removable water tank on the BP series has a larger capacity and is even equipped with a level indicator.

### **ROBUST DESIGNS**

For tough-going: the protective frame is designed to protect the engine and other components from impacts, mishaps and rough handling.



### **AND FOR ADDED SAFETY**

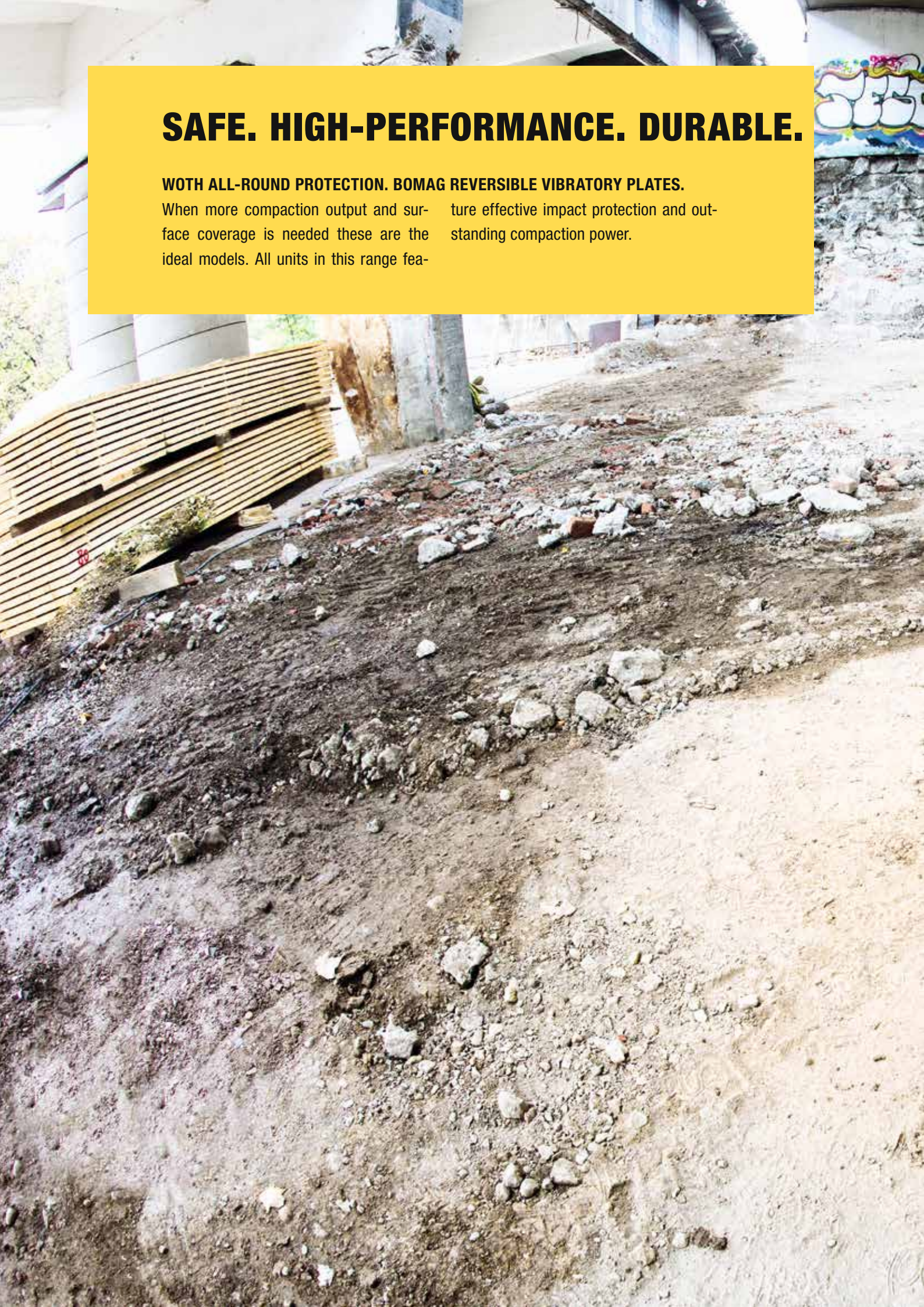
The V-belt guard, standard on all models, provides the operator with permanent protection from injury and the fully enclosed design results in fewer repairs.

# SAFE. HIGH-PERFORMANCE. DURABLE.

## WITH ALL-ROUND PROTECTION. BOMAG REVERSIBLE VIBRATORY PLATES.

When more compaction output and surface coverage is needed these are the ideal models. All units in this range fea-

ture effective impact protection and outstanding compaction power.







**MIDDLE-WEIGHT POWER-PACKED UNITS:**

**BPR PERFORMANCE CLASS 45 TO 60 KN.**

**BPR – LEISTUNGSKLASSE VON 45 BIS 60 KN.**

The 350 to 500 kg operating weights of these diesel-operated vibratory plates from BOMAG deliver excellent compaction results, and superb surface coverage, especially on earthworks and paving work.

# MACHINES WHICH OUT-PERFORM.

*Reversible vibratory plates are popular choices on many small and medium-sized construction sites. BOMAG offers a full range of models with operating weights from 120 to 750 kg. These are uncompromising compaction units for earthworks, asphalt and block paving.*

## **LIGHT AND VERSATILE: PERFORMANCE CLASS 25 TO 40 KN.**

With operating weights of 120 to 300 kg and an optional transport wheels, these models are easy to transport and are ideal for a very wide range of applications.



## **HEAVY DUTY POWER-PACKED UNITS: BPR PERFORMANCE CLASS 70 TO 100 KN.**

With large working widths and massive compaction power, these heavyweight models provide top performance on tough sites.



## **REMOTE CONTROL POWER-PACKED UNIT: MODEL BPH 80/65 S.**

The ultimate compaction power for trench, sewer and pipeline construction. Radio/cable or cable remote control makes work easy and provides an extra level of safety.



# SMARTER DESIGN.

## MOVE FAST

Robust, solid rubber transport wheels are quick-mounting, allowing easy movement to the next site. Available on all models up to 300 kg.



## EASY MANOEUVRING

The TipControl and integrated reversing protection as standard provide maximum safety and easy operation in the over 500 kg class.



## **ALL-ROUND PROTECTION**

The hinged, all-round protection hood provides maximum protection and optimum access to the engine and other components, saving time and money.



## **INDIVIDUAL ADJUSTMENT**

Every operator can select the ideal working position with the height adjustable, low-vibration steering rod.



## **ECONOMIZER. COMPACTION CONTROL.**

The BOMAG ECONOMIZER shows the operator real-time compaction progress on a continuous easy-read display. This support system prevents unnecessary

passes and immediately identifies weak spots. The BOMAG ECONOMIZER is available on all reversible vibratory plates over 350 kg.

# NO BREAKAGES HERE.

## STONEGUARD. THE PAVING PLATE.

With conventional compaction equipment the breakage rate of paving stones is often as high as 30%. Costs can easily escalate. The new BOMAG paving plate is designed to prevent this type of loss. The STONEGUARD series includes several models of reversible vibratory plates with operating weights between 150 and 500 kg. Using this unique paving plate, contractors achieve hitherto unachievable results in terms of surface coverage, handling and

quality, with the added bonus of reduced block breakage rates.

### YOUR BENEFITS ARE:

- Increases working speed by up to 30%
- Prevents edge and paving block breakages
- Allows vibratory compaction to the final block
- Allows vibratory compaction of large slabs
- Prevents damage to surrounding structures

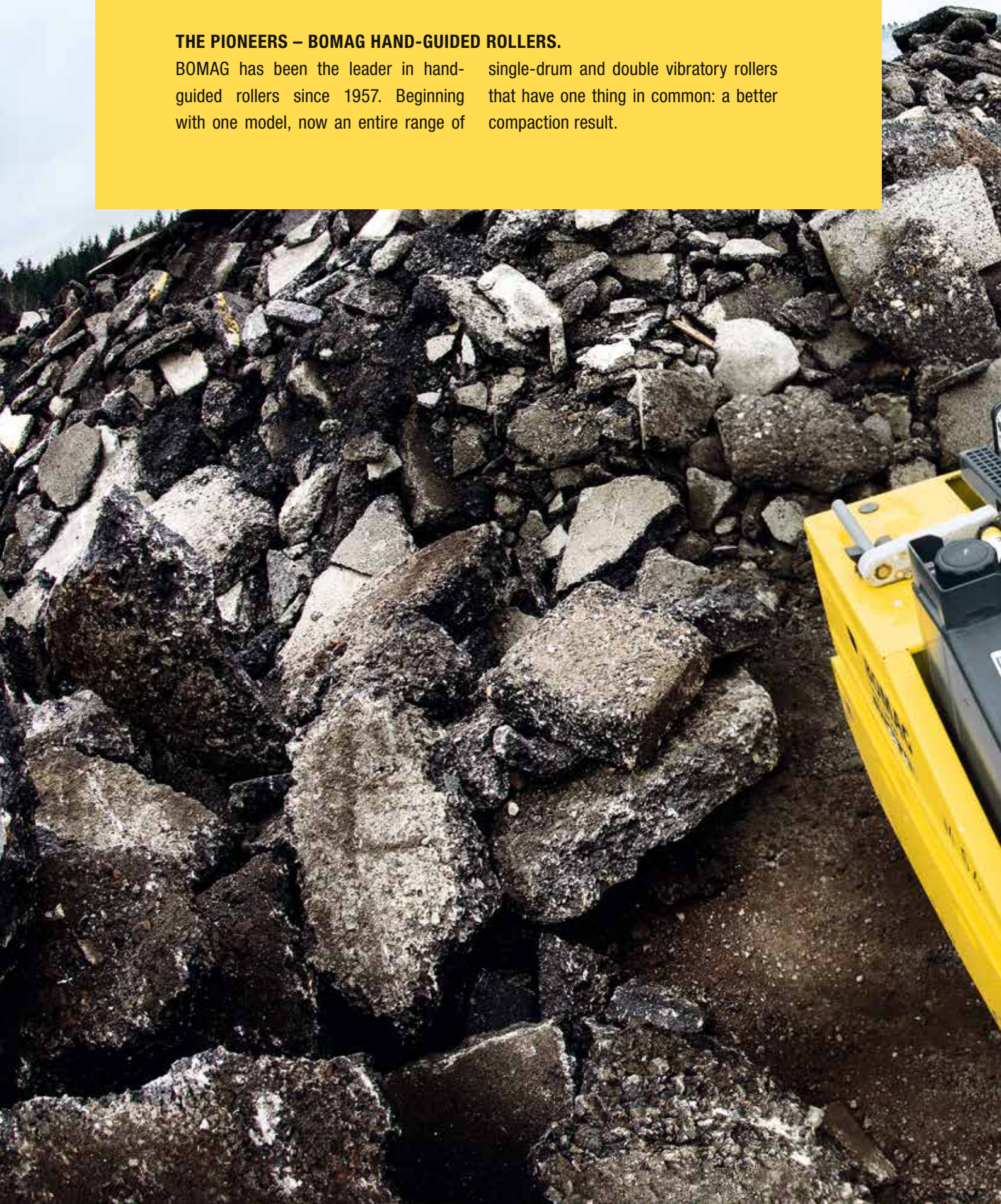


# COMPACTION QUALITY. EVERY TIME. EVERY SITE.

## THE PIONEERS – BOMAG HAND-GUIDED ROLLERS.

BOMAG has been the leader in hand-guided rollers since 1957. Beginning with one model, now an entire range of

single-drum and double vibratory rollers that have one thing in common: a better compaction result.





**HEAVY-DUTY DOUBLE  
VIBRATORY ROLLER:  
MODEL BW 75 H.**

This popular model is ideal for asphalt construction and earthworks. The 750 mm drum width and the high compaction power of all hand-guided models automatically provides outstanding surface coverage.



**LIGHT DUTY SINGLE  
DRUM VIBRATORY ROLLER:  
BW 55 E.**

This basic all-round model stands out with easy handling in confined spaces. Ideal whenever manoeuvrability and easy transport are key factors. The pioneer in its class.



**HEAVY DUTY SINGLE  
DRUM VIBRATORY ROLLER:  
BW 71 E-2.**

The BW 71 E-2 excels for surface quality and coverage, especially on asphalt applications and repair and maintenance work. The large 600 mm drum diameter and 710 mm working width give excellent finishing results.



# MILESTONES IN COMPACTION TECHNOLOGY.

*No other manufacturer has the experience of BOMAG, since its launch of the first hand-guided double vibratory roller. Technology has developed steadily since then. But one thing remains the same: the unrivalled compaction quality and reliability of a BOMAG roller.*

## **LIGHT DOUBLE VIBRATORY ROLLER: MODEL BW 65 H.**

The popular model features BOMAG double vibration with hydrostatic drive to guarantee smooth speed control and high travel speeds.



# INNER VALUES.

## LOADED QUICKLY

The hinged steering rod offers space-saving transportation and convenient loading.



## VERSATILITY

All hand-guided vibratory rollers are equipped with a water tank as standard.

## THE DRIVE

The maintenance-free, mechanical drive ensures constant traction on any job.



### **EASY START**

Manual or electric start comes as standard with these double vibratory rollers.

### **WORK SAFELY**

From speed control to vibration mode: all functions are easy and safe for the operator to control on one handle.



### **SUPER POWER**

The proven BOMAG double vibration system produces uniquely quiet and smooth running characteristics giving uniform surface quality. Compaction and surface coverage is outstanding with high centrifugal forces and excellent working speed.

# DESIGNED FOR SOIL. HIGH OUTPUT. SAFE OPERATION.

## **BOMAG MULTI-PURPOSE COMPACTOR.**

When work demands intelligent solutions: this articulated, radio-controlled, multi-purpose compactor gets to the places

where operators can't or prefer not to go. Drivers remain in complete safety with radio remote control. And so will your site.







**SUPERIOR COMPACTION.**

With an operating weight of around 1.6 t, this multi-purpose compactor achieves outstanding compaction results on soil compaction in trenches, sewers and on pipeline construction.

# EARTHWORKS EVOLUTION.

*The BOMAG BMP 8500 articulated, multi-purpose compactor was specially designed for earthworks; it is particularly suitable for compaction on cohesive soils in trenches, backfills, sewer and pipeline construction, and sub-structural and foundation work. And anywhere where a job gets narrow or hazardous.*

## REMOVABLE DRUM EXTENSION WITH PAD FEET.

The working width can be easily varied between 610 and 850 mm with the drum extensions which come as standard. They are ready for use in any trench in minutes.



## SMOOTH DRUMS.

The BOMAG BMP 8500 can also be optionally equipped with a smooth drum for improved surface quality without pad-foot prints, even on sandy materials.



# HIGH TECHNOLOGY.

## THE ENGINE

Both the modern KUBOTA engine and BOMAG ECOMODE provide the lowest operating costs. If the remote control is not activated, the engine will automatically change to idle speed after a few seconds. That saves hard cash.



## QUICK EXTENSION

Reliability from experience: the original BOMAG drum extenders allows you to adapt the working width from 610 to 850 mm in just minutes.

## RELIABLE RADIO CONTROL

With radio/cable remote control, problems caused by intense sunlight, shoring work, or the simultaneous use of other machines are eliminated. Frequency adjustments and malfunctions due to mechanical wear no longer apply.



## SAFE RESPONSE

If the operator enters into the close vicinity of the machine, the travel system is automatically stopped by BOSS (BOMAG Operator Safety System) to prevent accidents. That is BOMAG safety.

## BUILT-IN SAFETY

The fully encased exciter housing prevents water and dirt ingress, as well as abrasion to the hydraulic hoses. This increases operational safety and prevents costly repair work over the long term.



# KNOWING WHEN IT'S FINISHED.

*The BMP 8500 remote-controlled multi-purpose compactor is best used when conditions become confined or inaccessible. Featuring legendary BOMAG quality, this is the first machine of this type to display compaction progress. Guessing is now a thing of the past.*

## THE OPERATOR KNOWS WHEN COMPACTION IS FINISHED.

Unique in compaction technology: The BOMAG ECONOMIZER is integrated into the hood of the BMP 8500 which means it is easy to see and well protected. The unit aids the operator in achieving optimum compaction results and could not be simpler, as there is no need for activation and calibration.

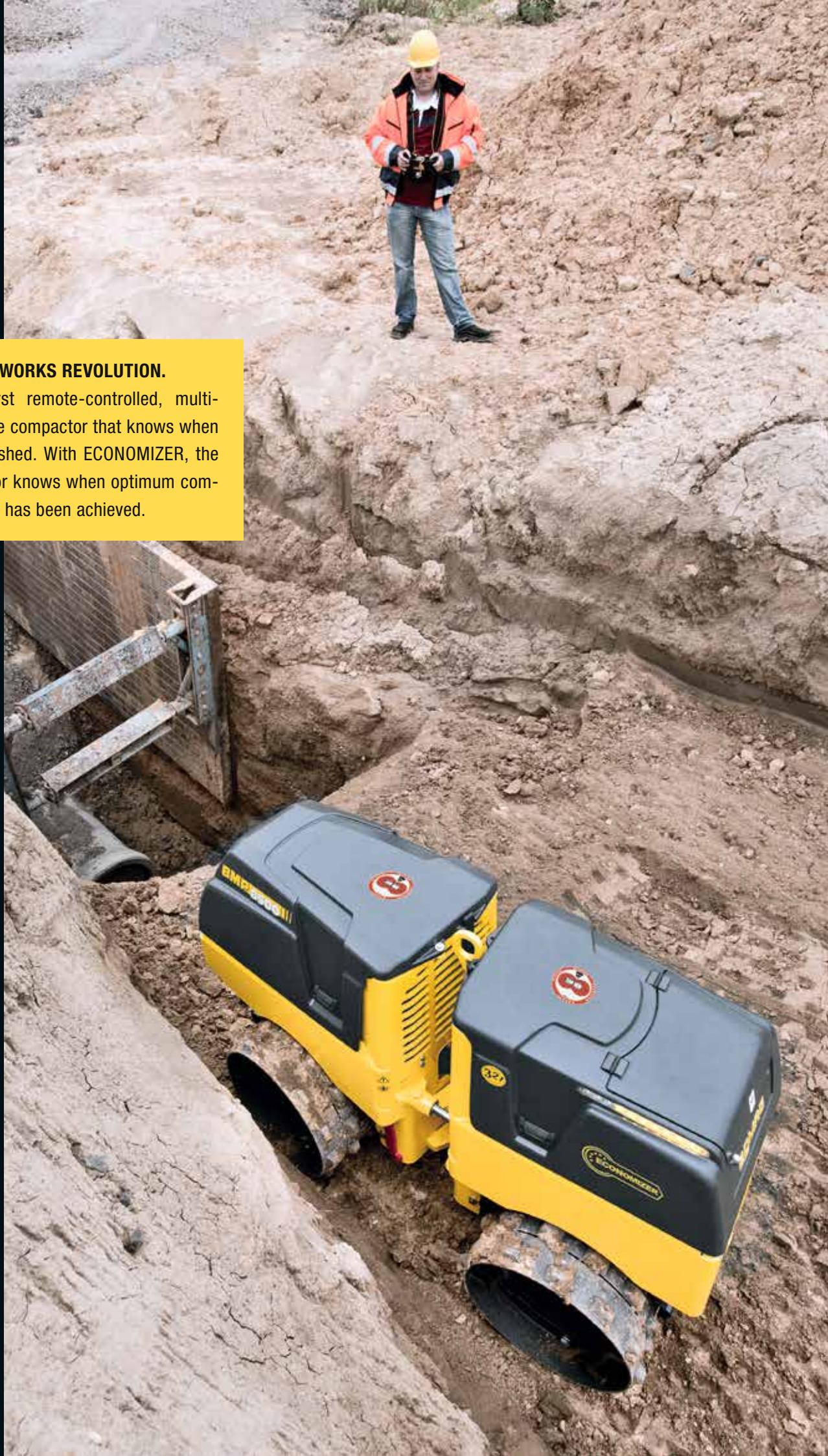
The ECONOMIZER automatically determines compaction progress. This allows the operator to identify weak spots in the subsoil continuously and accurately, and to respond appropriately in good time. Expensive reworking no longer applies. In addition, unnecessary passes and overcompaction are also avoided which saves up to 25% time.





### **EARTHWORKS REVOLUTION.**

The first remote-controlled, multi-purpose compactor that knows when it's finished. With ECONOMIZER, the operator knows when optimum compaction has been achieved.



# ALWAYS THE RIGHT PART: BOMAG ORIGINAL PARTS AND SERVICE.

*In selecting your machine, you will have made a decision in favour of BOMAG. Now you can rely on proven BOMAG quality in service and parts which will ensure the efficiency of your machine over the long-term.*



## **GUARANTEED BOMAG QUALITY.**

If you work a site hard, you need to be able to rely on your machines. This is why every BOMAG machine is tested thoroughly, inside and out. We have total confidence in the quality of our machines, which is why we offer as standard the 3-2-1 warranty.



### **ALL SERVICE PARTS IN ONE BOX.**

BOMAG service kits have been individually compiled by our service experts for your machine and contain all parts needed for top maintenance in one handy package. And you save money - up to 15% compared to individual orders.



### **BOMAG UNIQUENESS.**

BOMAG original parts are matched exactly to your machine, and offer reliability and proven quality. Unlike copies, they meet our highest quality standards in terms of functionality and service life so that your BOMAG remains a BOMAG.









### **ALWAYS RELIABLE.**

The best service and high availability of original parts are included when you purchase your BOMAG. You may count on us as a global partner, with twelve companies abroad and over 500 dealers in more than 120 countries. No matter where your machine's working, we will never let you down!

# APPLICATION TIPS FOR EARTHWORKS AND ASPHALT.

Guidelines\* for the non-compacted/compacted layer thickness dependant on soil type and type of compaction equipment.

| PRODUCT RANGE  | MACHINE TYPE<br>(EXAMPLE) | SPECIFICATION |         | ROCK  |
|--|---------------------------|---------------|---------|-------|
|  |                           | kN            | kg      |       |
| TAMPERS<br>                                     | BT 60                     | ≤15           | < 62    | –     |
|  | BT 65                     | 16–17         | 62–85   | –     |
| SINGLE DIRECTION<br>VIBRATORY PLATES<br>        | BP 12/40                  | < 20          | 65–91   | –     |
|  | BP 20/50                  | > 20          | 95–109  | –     |
|  | BP 25/50 D                | > 25          | > 108   | –     |
| REVERSIBLE<br>VIBRATORY PLATES<br>            | BPR 25/40                 | ≤ 25          | ≤ 150   | –     |
|  | BPR 35/60 D               | ≤ 35          | ≤ 230   | –     |
|  | BPR 45/55 D               | ≤ 50          | ≤ 400   | –     |
|  | BPR 60/65 D               | ≤ 60          | ≤ 460   | –     |
|  | BPR 70/70 D               | ≤ 70          | ≤ 600   | 35/30 |
|  | BPR 100/80 D              | ≤ 100         | > 700   | 50/45 |
| HAND-GUIDED ONE-DRUM<br>VIBRATORY ROLLERS<br> | BW 55 E                   | 10            | ≤ 170   | –     |
|  | BW 71 E-2                 | 16            | ≤ 500   | –     |
| HAND-GUIDED DOUBLE<br>VIBRATORY ROLLERS<br>   | BW 65 H                   | 22            | ≤ 800   | –     |
|  | BW 75 H                   | 40            | ≤ 1.100 | –     |
| MULTI-PURPOSE<br>COMPACTORS<br>               | BMP 8500                  | 72            | > 1.500 | –     |

\* These guidelines are the result of trial compaction and site operations. Compaction specifications can generally be achieved in four to eight passes under normal application conditions.

# FRONT SHELL

# ASPHALT

| CRUSHED ROCK                             | SAND/GRAVEL | MIXED SOILS | SILT/CLAY | SURFACE LAYER<br>2–4 cm | BINDER COURSE<br>6–8 cm | BEARING COURSE<br>10–14 cm |
|--|-------------|-------------|-----------|-------------------------|-------------------------|----------------------------|
| LAYER THICKNESS: NON-COMPACTED/COMPACTED |             |             |           |                         |                         |                            |
| 30/25                                    | 45/35       | 35/30       | 30/25     | –                       | ✓                       | ✓                          |
| 30/25                                    | 50/40       | 35/30       | 30/25     | –                       | ✓                       | ✓                          |
| –  | 25/20       | 20/20       | –         | ✓                       | –                       | –                          |
| –  | 30/25       | 25/20       | –         | ✓                       | –                       | –                          |
| 15/13                                    | 35/30       | 30/25       | 20/15     | ✓                       | ✓ (6 cm)                | ✓ (10 cm)                  |
| 15/13                                    | 35/30       | 30/25       | 20/15     | ✓                       | ✓                       | ✓ (10 cm)                  |
| 20/15                                    | 35/30       | 30/25       | 20/15     | –                       | ✓                       | ✓                          |
| 25/20                                    | 42/35       | 35/30       | 30/25     | –                       | –                       | ✓                          |
| 30/25                                    | 50/40       | 45/35       | 30/25     | –                       | –                       | ✓                          |
| 40/35                                    | 55/45       | 50/40       | 35/30     | –                       | –                       | ✓                          |
| 45/40                                    | 75/60       | 60/50       | 40/35     | –                       | –                       | ✓                          |
| –  | 25/20       | 25/20       | –         | ✓                       | ✓                       | ✓                          |
| –  | 25/20       | 25/20       | 18/15     | ✓                       | ✓                       | ✓                          |
| 15/10                                    | 25/20       | 25/20       | 12/10     | ✓                       | ✓                       | ✓                          |
| 15/10                                    | 30/25       | 30/25       | 18/15     | ✓                       | ✓                       | ✓                          |
| 35/30                                    | 40/35       | 45/35       | 35/30     | –                       | –                       | –                          |

– unsuitable

✓ suitable

# APPLICATION TIPS FOR PAVING WORK.

Guidelines\* for the non-compacted/compacted layer thickness depending on soil type and compaction equipment.

## PLASTIC MATS

Natural stone  
(hewn/split/ground/diamond-cut)  
Concrete blocks  
(small to medium-sized surfaces)

HEIGHT



| PRODUCT RANGE  | MACHINE TYPE (EXAMPLE) | SPECIFICATION |           | 6 cm | 8 – 10 cm | ≥ 12 cm |
|--|------------------------|---------------|-----------|------|-----------|---------|
|  |                        | kN            | kg        |      |           |         |
| <b>SINGLE DIRECTION VIBRATORY PLATES</b><br><br><br><br>Plastic mats  | <b>BP 10/35</b>        | ≥ 10          | 90        | ✓    | -         | -       |
|  | <b>BP 20/50</b>        | 18 – 20       | 90 – 130  | ✓    | -         | -       |
| <b>REVERSIBLE VIBRATORY PLATES</b><br><br><br><br>Plastic mats<br><br><br><br>STONEGUARD | <b>BPR 25/50</b>       | 20 – 25       | 130 – 160 | ✓    | ✓         | -       |
|  | <b>BPR 35/60 D</b>     | 30 – 40       | 200 – 300 | ✓    | ✓         | -       |
|  | <b>BPR 60/65 D</b>     | 45 – 60       | 380 – 450 | -    | ✓         | ✓       |
|  | <b>BPR 70/70 D</b>     | ≥ 70          | 500 – 600 | -    | ✓         | ✓       |

\*The guide values result from trial compaction and practical operations. The compaction requirements can be fulfilled with four to eight passes under normal application conditions.

# STONEGUARD – THE PAVING PLATE

Concrete blocks, natural stone (cut/diamond-cut), large surfaces, large formats, non-bevelled stones, sensitive surfaces and stone formats

## WEIGHT AND DIMENSIONS



| 25 x 25 x 8 cm | 37,5 x 25 x 8 cm | 50 x 25 x 8 cm | 50 x 50 x 8 cm | 50 x 10 x 12 cm | 60 x 30 x 8 cm | 100 x 50 x 8 cm | 100 x 100 x 8 cm |
|----------------|------------------|----------------|----------------|-----------------|----------------|-----------------|------------------|
| 12 kg**        | 18 kg**          | 24 kg**        | 48 kg**        | 14 kg**         | 35 kg**        | 96 kg**         | 192 kg**         |
| ×              | ×                | ×              | ×              | ×               | ×              | ×               | ×                |
| ×              | ×                | ×              | ×              | ×               | ×              | ×               | ×                |
| ✓              | ✓                | ✓              | -              | -               | -              | -               | -                |
| ✓              | ✓                | ✓              | ✓              | ✓               | ✓              | -               | -                |
| ✓              | ✓                | ✓              | ✓              | ✓               | ✓              | ✓               | ✓                |
| ×              | ×                | ×              | ×              | ×               | ×              | ×               | ×                |

\*\* Weight per stone

× unavailable

- unsuitable

✓ suitable

# THE RIGHT MACHINE FOR EVERY JOB.

## TAMPER



**BT 60**  
Operating weight: 58 kg  
Centrifugal force: 15 kN  
Working width: 230 mm



**BT 65**  
Operating weight: 68 kg  
Centrifugal force: 17 kN  
Working width: 280 mm



**BVT 65**  
Operating weight: 67 kg  
Centrifugal force: 16 kN  
Working width: 280 mm



**BT 80 D**  
Operating weight: 81 kg  
Centrifugal force: 17.5 kN  
Working width: 330 mm



**BT 60 G**  
Operating weight: 65 kg  
Centrifugal force: 15 kN  
Working width: 230 mm



**BT 65 G**  
Operating weight: 75 kg  
Centrifugal force: 17 kN  
Working width: 280 mm

## SINGLE DIRECTION VIBRATORY PLATES



**BP 10/35**  
Operating weight: 65 kg  
Centrifugal force: 10 kN  
Working width: 350 mm



**BP 12/40**  
Operating weight: 72 kg  
Centrifugal force: 12 kN  
Working width: 400 mm



**BP 12/50**  
Operating weight: 75 kg  
Centrifugal force: 12 kN  
Working width: 500 mm



**BP 20/50**  
Operating weight: 95 kg  
Centrifugal force: 20 kN  
Working width: 500 mm



**BP 20/50 D**  
Operating weight: 109 kg  
Centrifugal force: 20 kN  
Working width: 500 mm



**BP 25/50**  
Operating weight: 108 kg  
Centrifugal force: 25 kN  
Working width: 500 mm



**BP 25/50 D**  
Operating weight: 122 kg  
Centrifugal force: 25 kN  
Working width: 500 mm



**BVP 10/36**  
Operating weight: 83 kg  
Centrifugal force: 10 kN  
Working width: 360 mm



**BVP 18/45**  
Operating weight: 91 kg  
Centrifugal force: 18 kN  
Working width: 450 mm

## REVERSIBLE HYDRAULIC PLATE



**BPH 80/65 S**  
Operating weight: 750 kg  
Centrifugal force: 80 kN  
Working width: 800 mm

## HAND-GUIDED SINGLE DRUM VIBRATORY ROLLERS



**BW 55 E**  
Operating weight: 161 kg  
Centrifugal force: 10 kN  
Working width: 560 mm



**BW 71 E-2**  
Operating weight: 488 kg  
Centrifugal force: 16 kN  
Working width: 710 mm



## REVERSIBLE VIBRATORY PLATES



**BPR 25/40**  
Operating weight: 135 kg  
Centrifugal force: 25 kN  
Working width: 400 mm



**BPR 25/40 D**  
Operating weight: 150 kg  
Centrifugal force: 25 kN  
Working width: 400 mm



**BPR 25/50**  
Operating weight: 140 kg  
Centrifugal force: 25 kN  
Working width: 500 mm



**BPR 25/50 D**  
Operating weight: 155 kg  
Centrifugal force: 25 kN  
Working width: 500 mm



**BPR 35/42 D**  
Operating weight: 210 kg  
Centrifugal force: 35 kN  
Working width: 420 mm



**BPR 35/60**  
Operating weight: 205 kg  
Centrifugal force: 35 kN  
Working width: 600 mm



**BPR 35/60 D**  
Operating weight: 225 kg  
Centrifugal force: 35 kN  
Working width: 600 mm



**BPR 40/60 D**  
Operating weight: 260 kg  
Centrifugal force: 40 kN  
Working width: 600 mm



**BPR 45/55 D**  
Operating weight: 395 kg  
Centrifugal force: 45 kN  
Working width: 550 mm



**BPR 50/55 D**  
Operating weight: 400 kg  
Centrifugal force: 50 kN  
Working width: 550 mm



**BPR 55/65 D**  
Operating weight: 450 kg  
Centrifugal force: 55 kN  
Working width: 650 mm



**BPR 60/65 D**  
Operating weight: 455 kg  
Centrifugal force: 60 kN  
Working width: 650 mm



**BPR 70/70 D**  
Operating weight: 580 kg  
Centrifugal force: 70 kN  
Working width: 700 mm



**BPR 100/80 D**  
Operating weight: 710 kg  
Centrifugal force: 100 kN  
Working width: 800 mm



**STONEGUARD**  
Available for: BPR 25/50 D; BPR 35/60; BPR 35/60 D;  
BPR 50/55 D; BPR 55/65 D; BPR 60/65 D  
Working widths: 530 to 680 mm

## HAND-GUIDED DOUBLE VIBRATORY ROLLERS



**BW 65 H**  
Operating weight: 757 kg  
Centrifugal force: 22 kN  
Working width: 650 mm



**BW 75 H**  
Operating weight: 1,040 kg  
Centrifugal force: 40 kN  
Working width: 750 mm

## MULTI-PURPOSE COMPACTORS



**BMP 8500**  
Operating weight: 1,595 kg  
Centrifugal force: 72/36 kN  
Working width: 610 mm / 850 mm





## **IN EVERY BOMAG MACHINE: EXPERTISE UNITED.**

From tampers to multi-purpose compactors: our near 60 years of compaction experience is incorporated into every machine. Plus our understanding of your

needs. Because every conversation we have with you makes us wiser and our machines better. Thank you for your confidence in BOMAG!

Head Office / Hauptsitz:

**BOMAG**  
Hellerwald  
56154 Boppard  
GERMANY  
Tel. +49 6742 100-0  
Fax +49 6742 3090  
info@bomag.com

**BOMAG Maschinen-  
handels-gesellschaft m.b.H.**  
Porschestraße 9  
1230 Wien  
AUSTRIA  
Tel. +43 1 69040-0  
Fax +43 1 69040-20  
austria@bomag.com

**BOMAG MARINI EQUIPAMENTOS LTDA.**  
Rua Comendador Clemente Cifali, 530  
Distrito Industrial Ritter  
Cachoeirinha – RS  
BRAZIL  
ZIP code 94935-225  
Tel. +55 51 2125-6677  
Fax +55 51 3470-6220  
brasil@bomag.com

**BOMAG (CANADA), INC.**  
3455 Semenyk Court  
Mississauga, Ontario L5C 4P9  
CANADA  
Tel. +1 905 361 9961  
Fax +1 905 361 9962  
canada@bomag.com

**BOMAG (CHINA)**  
Compaction Machinery Co. Ltd.  
No. 2808 West Huancheng Road  
Shanghai Comprehensive  
Industrial Zone (Fengxian)  
Shanghai 201401  
CHINA  
Tel. +86 21 33655566  
Fax +86 21 33655508  
china@bomag.com

**BOMA Equipment  
Hong Kong LTD**  
Room 1003, 10/F Cham Centre  
700, Castle Peak Road  
Kowloon  
HONG KONG  
Tel. +852 2721 6363  
Fax +852 2721 3212  
bomahk@bomag.com

**BOMAG France S.A.S.**  
2, avenue du Général de Gaulle  
91170 Viry-Châtillon  
FRANCE  
Tel. +33 1 69578600  
Fax +33 1 69962660  
france@bomag.com

**BOMAG (GREAT BRITAIN), LTD.**  
Sheldon Way  
Larkfield, Aylesford  
Kent ME20 6SE  
GREAT BRITAIN  
Tel. +44 1622 716611  
Fax +44 1622 710233  
gb@bomag.com

**BOMAG Italia Srl.**  
Via Roma 50  
48011 Alfonsine  
ITALY  
Tel. +39 0544 864235  
Fax +39 0544-864367  
italy@bomag.com

**FAYAT BOMAG Polska Sp. z o.o.**  
Ul. Szyszkowa 52  
02-285 Warszawa  
POLAND  
Tel. +48 22 482 04 00  
Fax +48 22 482 04 01  
poland@bomag.com

**FAYAT BOMAG RUS OOO**  
141400, RF, Moscow region  
Khimki, Klayazma block, h. 1-g  
RUSSIA  
Tel. +7 (495) 287 92 90  
Fax +7 (495) 287 92 91  
russia@bomag.com

**BOMAG GmbH**  
300 Beach Road  
The Concourse, #18-06  
Singapore 199555  
SINGAPORE  
Tel. +65 6 294 1277  
Fax +65 6 294 1377  
singapore@bomag.com

**BOMAG Americas, Inc.**  
125 Blue Granite Parkway  
Ridgeway SC 29130  
U.S.A.  
Tel. +1 803 3370700  
Fax +1 803 3370800  
usa@bomag.com

