

Flanged series

High repeatability precision turbine meters



Features

- High accuracy
- Wide flow range
- Fast response to rate changes
- Simplicity of construction with few parts
- Cost effective
- Calibration traceable to NIST

Description

The flange series is identical to the AN series, except for a few minor variations in size, end connections and construction to permit use in industrial applications.

This series incorporates flanged end connections with ball bearings.

Performance specifications

Accuracy	± 0.25% of reading
Repeatability	± 0.02% of reading
Max. frequency output	1200 Hz to max. 1500 Hz standard 2400 Hz optional
Pressure rating	150 - 600# ANSI class rating
Min. output signal	Min. 10 millivolts
Response time	2-3 ms or better

Applications

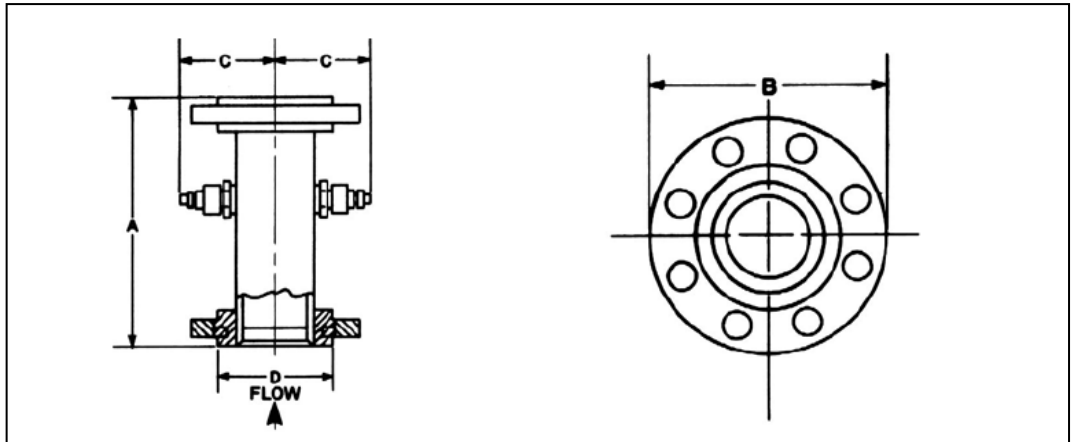
The flanged series finds wide usage in the automotive, petroleum products, and aerospace applications fields.

Installation

The meters can be mounted directly in the line and can be installed in any position without affecting performance. To reduce flow turbulence, a straight section of tube approximately 10 diameters in length upstream of the flowmeter is recommended, and a similar section about 5 diameters downstream. Where impractical due to space limitations, careful attention to location of valves, bends, etc., is suggested. Flow straightener sections are available from Badger Meter). Upstream filtration (10 micron) is also helpful to extend bearing life and to prevent possible damage to the rotor, but is not an absolute necessity. Electrical installation requires 2-conductor shielded cable to the readout device.

* Cox is a division of Badger Meter, Inc.

Dimensions (in mm)



Model	A	B 150 LB FLG.*	B 300 LB FLG.*	B 600 LB FLG.*	C	D
F-1/2 (8-4)	127	89	95	92	106	35
F-1/2 (8-6)	127	89	95	92	107	35
F-1/2 (8)	127	89	95	92	108	35
F-3/4 (10)	139.7	99	117	117	110	43
F-3/4 (12)	139.7	99	117	117	112	43
F-1	139.7	108	124	124	115	51
F-1 1/4	152	117	133	133	118	64
F-1 1/2	152	127	155	155	120	73
F-2	229	152	165	165	127	92
F-2 1/2	254	178	191	191	133	105

*ANSI raised face integral flanges

Magnetic pickup			Modulated carrier pickup	
Model	Model for reference only	Specifications	Model for reference only	Specifications
F-1/2"(8-4)-(*)	AN 8-4	See bulletin 42-AN	ANC 8-4	See bulletin 42-AN
F-1/2"(8-6)-(*)	AN 8-6		ANC 8-6	
F-1/2"(8)-(*)	AN 8		ANC 8	
F-3/4"(10)-(*)	AN 10		ANC 10	
F-3/4"(12)-(*)	AN 12		ANC 12	
F-1"(*)	AN 16		ANC 16	
F-1 1/4"(*)	AN 20		ANC 20	
F-1 1/2"(*)	AN 24		ANC 24	
F-2"(*)	AN 32		ANC 32	
F-2 1/2"(*)	AN 40		---	

* Specify flange rating 150, 300 or 600 lb